



Need ● ● ●
toKNOW
LOOE COMMUNITY ACADEMY

Year 9
Summer 2

Be the
BEST
you can be

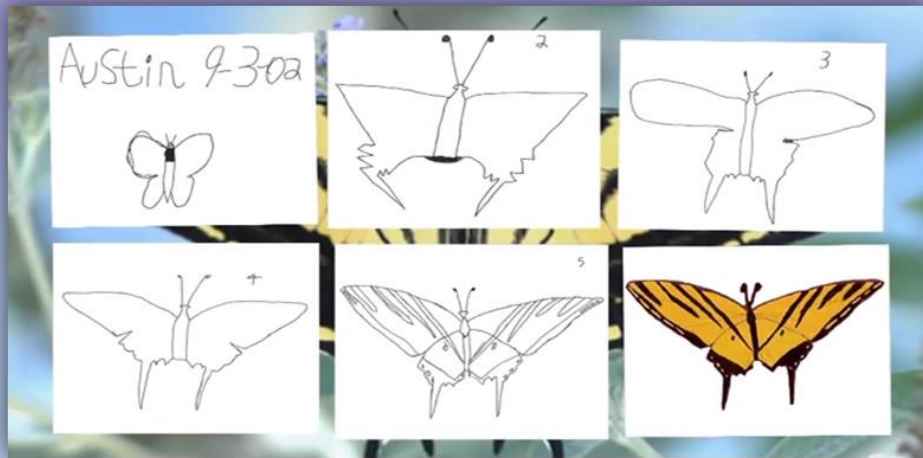




Need to KNOW
LOOE COMMUNITY ACADEMY

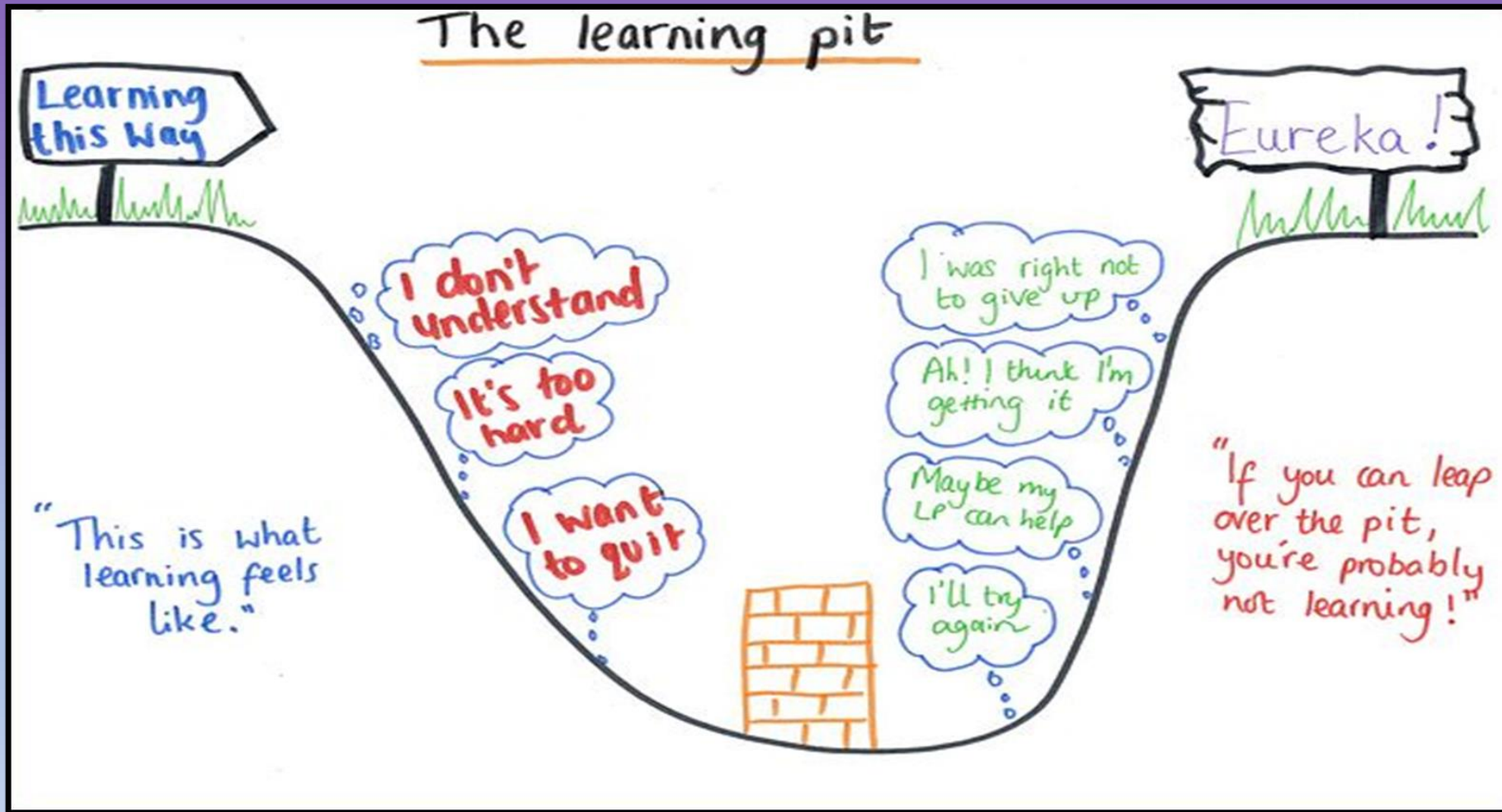
To become an **expert learner** you need to have the right mindset and understand the **'Power of YET'**!

Check out Austin's butterfly picture below and learn how he seeks feedback to improve his work to achieve the most amazing results!





The Learning Pit is a picture to help you remember that you are constantly going to be challenged and confused when you learn something new, but it's about knowing what to do in order to overcome these challenges to get to the other side of the pit!



1

Magnificent Metacognition



Plan

Is this similar to a previous task?
What do I want to achieve?
What should I do first?

Monitor

Am I on the right track?
What can I do differently?
How can I ask for help?

Evaluate

What worked well?
What could I have done better?
Can I apply this to other situations?

2

Marvellous Memory



My memory and learning improves when I learn through spaced, retrieval, interleaved, elaborated, and use of concrete examples in practice.

I must use the best learning strategies above when using my 'Need to Know' to complete pre and post learning tasks.

During lessons I am a responsible Lead Learner, I teach my self and peers through mini tests, flashcards and look/cover/write/check/review, this help me and my peers learn quickly.

3

Love My Learning



I have a growth mindset and believe I can be as SMART as I want to be! My brain is a muscle and it will growth bigger with the amount of effort I put into practice.

I seek feedback and enjoy acting on it. I see 'EBI' and 'T' from my teachers / peers as opportunities to improve, by acting on feedback I experience success as a learner.

I can be my own teacher and can articulate what I am learning and why. I know my mastery goals and I seek errors as opportunities. I aspire to challenges and have no fear of failure!

4

Literacy for Life



Every hour I read is an hour improving my writing. Time is worth investing in my books and Accelerated Reader.

I always check my grammar, spelling and punctuation, this will help me to achieve the highest SPAG marks in my GCSE exams.

Practicing my reading skills and literacy will improve choice in job/career prospects. Success is when preparation makes opportunity and when practice makes permanent!

I NEED TO KNOW:

How to keep my body healthy.

The dangers of drugs, what is county lines and how to make responsible health choices such as vaccination and organ donations.

Legalisation– The process of making something legal to use.

Schizophrenia – A long term mental health condition which can cause a sufferer to have frightening hallucinations.

Class C Drugs – Illegal narcotics classified as being of the third most harmful and addictive kind - possession or sale of which incurs corresponding legal penalties (the third most serious after Class A and B).

Prescription drugs – drugs which can be legally given (prescribed) by a medical professional. They are only legal to take in such cases.

County Lines – Gangs sending young people from cities into smaller towns and villages in order to sell drugs to the people living in these areas.

Disenchantment- to be disillusioned, in this case with society, and not feeling like there is no part in it for you and you could never play a successful role.

Trap House – a base used for drug operations, usually a person's home who has been bribed or threatened into the situation.

Organ donation - *when you decide to give an organ to save or transform the life of someone else.*

Stem cells - special human cells that are able to develop into many different cell types.

Vaccination - The act of introducing a vaccine into the body to produce protection from a specific disease.



County lines

We need your
help to stop it

#KnowTheSigns
#CountyLines



Question	Answer
What does legalisation mean?	
What is schizophrenia?	
What are Class C drugs?	
Why are prescription drugs important?	
What is county lines?	
What does disenchantment mean?	
What is a trap house?	
Why is organ donation important?	
What are stem cells?	
Why is vaccination important?	

Question	Answer
What does legalisation mean?	Legalisation means making something legal by law.
What is schizophrenia?	Schizophrenia is a mental illness affecting thoughts and feelings.
What are Class C drugs?	Class C drugs are drugs considered less harmful but still illegal without a prescription.
Why are prescription drugs important?	Prescription drugs are medicines that need a doctor's approval to use safely.
What is county lines?	County lines is a term for gangs moving drugs from cities to smaller towns.
What does disenchantment mean?	Disenchantment means feeling disappointed or losing trust in something.
What is a trap house?	A trap house is a place where illegal drugs are made or sold.
Why is organ donation important?	Organ donation saves lives by giving organs to people who need them.
What are stem cells?	Stem cells are special cells that can become different types of cells in the body.
Why is vaccination important?	Vaccination helps protect people from diseases by building immunity.

I NEED TO KNOW:

What is the plot of 'An Inspector Calls'? What quotations do I need to learn?
Why did Priestly write this play and what methods did he use?

The Basic Plot:

The play centres around the prosperous Birling family who are hosting a dinner party to celebrate the engagement of their daughter, Sheila Birling, to Gerald Croft, the son of a competing industrialist. The merriment is interrupted by the unexpected arrival of Inspector Goole, who investigates the suicide of a young woman named Eva Smith/Daisy Renton. We soon discover that each member of the dinner party has been involved in Eva/Daisy's life in some way. Priestley uses the plot and characters to voice his messages of social responsibility. The Inspector encourages them to be accountable for their actions, and to take responsibility for others. He conveys socialist values and reminds the characters that many people in society are vulnerable or mistreated through no fault of their own, just like Eva Smith.

Standard essay introduction:

Priestly wrote his morality play in 1945 but set the story in 1912 when the gap between social classes was even wider. He explores _____ (insert any theme/essay focus) to convey powerful messages to society's elite. Priestly was concerned about the lack of support for those in need and used the play 'An Inspector Calls' as a vehicle to express his strong socialist views and the hypocrisy within capitalism.

Subject terminology and ambitious vocabulary for your essay:

morality play
everyman
elite
socialist
capitalist
hypocrisy
poverty
antithesis
aristocratic
anaphora
euphemism
symbolism
pathos
ignorance
foreshadowing
dramatic irony
syndetic list
interrogative sentence
declarative sentence

My Key Quote Bank:

- 1) 'One person and one line of enquiry at a time'
- 2) 'Burnt her inside out of course'
- 3) 'unsinkable, absolutely unsinkable'
- 4) 'community and all that nonsense'
- 5) 'Well it's my duty to keep labour costs down'
- 6) 'Look mummy...isn't it a beauty?'
- 7) 'Well bred young man-about-town'
- 8) 'It frightens me the way you talk'
- 9) 'Why shouldn't they try for higher wages'
- 10) 'We all helped to kill her'
- 11) 'As if a girl of that sort would ever refuse money'
- 12) 'As if she was an animal, a thing, not a person'
- 13) 'Fire and blood and anguish'
- 14) '...there are millions...of Eva Smith...all intertwined with our lives'

Question	Answer
What is the main setting of An Inspector Calls?	
Who is Inspector Goole?	
What is the main theme of the play?	
What type of play is An Inspector Calls?	
How does Priestley portray the upper class?	
What literary device is used when characters ask questions to reveal truth?	
How does Priestley use dramatic irony in the play?	
What does the character Eva Smith symbolize?	
What is an example of anaphora in the play?	
What message does Priestley convey about capitalism?	

Question	Answer
What is the main setting of An Inspector Calls?	The Birling family's dining room during a dinner party in 1912.
Who is Inspector Goole?	A mysterious inspector who investigates Eva Smith's suicide and challenges the family.
What is the main theme of the play?	Social responsibility and class inequality.
What type of play is An Inspector Calls?	A morality play, similar to an everyman play.
How does Priestley portray the upper class?	As hypocritical and ignorant of their impact on the vulnerable.
What literary device is used when characters ask questions to reveal truth?	Interrogative sentences.
How does Priestley use dramatic irony in the play?	The audience knows more than the characters about the consequences of their actions.
What does the character Eva Smith symbolize?	The struggles of the working class and the vulnerable in society.
What is an example of anaphora in the play?	Repetition of phrases by Inspector Goole to emphasize social responsibility.
What message does Priestley convey about capitalism?	That it leads to hypocrisy, poverty, and neglect of the vulnerable.

I NEED TO KNOW: Probability and Statistics, and Surds

What do I need to be able to do?
 By the end of this unit, you should be able to:

- Find the mode, median, mean and range of a dataset
- Find missing values given an average
- Read information from scatter graphs
- Read information from stem & leaf diagrams
- Read information from bar charts
- Compare different representations of data

Ordering numbers -3, 8, 2, 12, -7, 0

Put these values into

ascending order: $-7, -3, 0, 2, 8, 12$

descending order: $12, 8, 2, 0, -3, -7$

Finding the mode of a data set

The modal value of a data set is the one that occurs the most

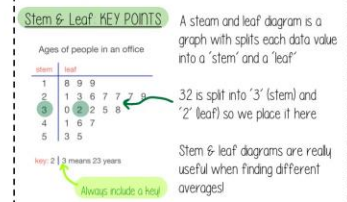
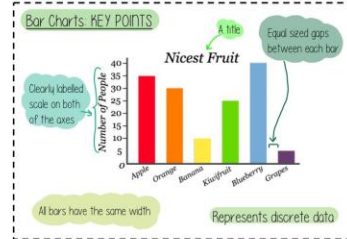
EXAMPLE 1 2, 2, 4, 5, 3, 2, 4
MODE = 2

EXAMPLE 2 Red, Blue, Green, Blue, Red, Blue
MODE = Blue

Finding the range of a data set

To find the range we calculate the difference between the largest and smallest value in the data set

EXAMPLE 20, 2, 14, 19, 8
 Smallest value: 2
 Largest value: 20
 Range = 20 - 2
RANGE = 18



STATISTICS I

Key Words

- Average**: a calculated 'central' value of a set of numbers
- Bimodal**: a data set with two modes
- Continuous Data**: data that can take any value (age, height, length...)
- Data Set**: a collection of facts, such as numbers, words etc...
- Discrete Data**: data that can only take given values (colour, favourite food...)
- Mean**: the average of the numbers in a data set
- Median**: the middle of a sorted list of numbers
- Mode**: the value that appears the most often in a data set
- Range**: the difference between the largest and smallest value in a data set

Finding the median of a data set

To find the median we

- Put the data in ascending order
- Identify the value in the middle

EXAMPLE 1 20, 2, 14, 19, 8
 Step 1: 2, 8, 14, 19, 20
 Step 2: 2, 8, 14, 19, 20
MEDIAN = 14

EXAMPLE 2 20, 2, 14, 19, 8, 12
 Step 1: 2, 8, 12, 14, 19, 20
 Step 2: 2, 8, 12, 14, 19, 20
 If we have an even number of values, and two in the middle, then we need to find the number that is in the middle of those
MEDIAN = 13

Finding the mean of a data set

To find the mean we

- Find the sum of the data
- Divide the overall total by how many pieces of data that you have

EXAMPLE 20, 2, 14, 19, 8
 Step 1: $20 + 2 + 14 + 19 + 8 = 63$
 Step 2: $63 \div 5 = 12.6$
MEAN = 12.6

Choosing which average to use

Averages should be representative of the data set - so it should be compared to the set as a whole to check if it is an appropriate average

EXAMPLE Here are the scores of 6 Year 7 students in a recent maths test: 0, 0, 10, 12, 15, 20

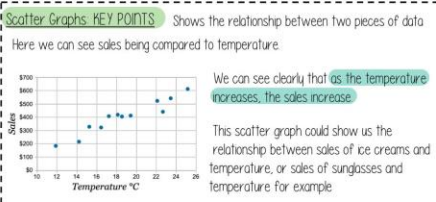
Let's find all of the averages!

MEAN 'add and divide': 9.5
 MODE 'most': 0
 MEDIAN 'middle': 11
 RANGE 'difference': 20

Put the data back into context

Range/Mode: just because 2 students scored 0 and one got 20, this does not represent the data

The Median or mean is the best average to represent the scores on this test



What do I need to be able to do?
 You should be able to:

- Simplify surds
- Add and subtract surds, leaving your answer in the simplest form
- Multiply and divide surds, leaving your answer in the simplest form
- Expand brackets involving surds
- Calculate exactly with surds
- Rationalise denominators

SURDS

Key Words

- Integer**: a whole number
- Rational Number**: a number which can be expressed in the form $\frac{a}{b}$, where a and b are integers
- Irrational Number**: a number which cannot be expressed in the form $\frac{a}{b}$, where a and b are integers
- Expand**: multiply out the brackets
- Square Number**: the result of multiplying an integer by itself

Examples and Non-Examples

$\sqrt{5}$ ✓ $5\sqrt{6}$ ✓ $\sqrt{2}$ ✓ $3\sqrt{2}$ ✓ $\sqrt{11}$ ✓ $\sqrt{197}$ ✓

$\sqrt{4}$ ✗ $\sqrt{27}$ ✗ $(\sqrt{5})^2$ ✗

The surd is simplified to which is a rational number
The surd is simplified to which is a rational number
The surd is simplified to which is a rational number

Simplifying Surds

Method 1 Simplify $\sqrt{24}$

Factors of 24: 1 x 24, 2 x 12, 3 x 8, 4 x 6

So $\sqrt{24} = \sqrt{4 \times 6} = \sqrt{4} \times \sqrt{6} = 2\sqrt{6}$

Method 2 Simplify $\sqrt{96}$

Factors of 96: 1 x 96, 2 x 48, 3 x 32, 4 x 24, 6 x 16, 8 x 12

So $\sqrt{96} = \sqrt{16 \times 6} = \sqrt{16} \times \sqrt{6} = 4\sqrt{6}$

Expanding brackets

Example 1 Expand and simplify $\sqrt{5}(2 + \sqrt{6})$

$\sqrt{5} \times 2 + \sqrt{5} \times \sqrt{6} = 2\sqrt{5} + \sqrt{30}$

Example 2 Expand and simplify $\sqrt{5}(3\sqrt{6} - 2\sqrt{2})$

$\sqrt{5} \times 3\sqrt{6} - \sqrt{5} \times 2\sqrt{2} = 3\sqrt{30} - 2\sqrt{10}$

Rationalising Denominators

Rationalising the denominator means we are making the denominator of the fraction a RATIONAL number (eg, not a surd)

Example 1 Rationalise the denominator and simplify $\frac{2}{3 + \sqrt{2}}$

We don't want to CHANGE the value of the fraction but we need to find an equivalent fraction with a rational denominator

We do this by multiplying by 1, in this case, $\frac{3 - \sqrt{2}}{3 - \sqrt{2}}$

Example 2 Rationalise the denominator and simplify $\frac{2}{3 - \sqrt{2}}$

Remember $(a+b)(a-b) = a^2 - b^2$. This result is very important here as we are left with only two square numbers, and we know that means no surds!

We call it the 'opposite of the conjugate of $3 - \sqrt{2}$ is $3 + \sqrt{2}$ '

So $\frac{2}{3 - \sqrt{2}} \times \frac{3 + \sqrt{2}}{3 + \sqrt{2}} = \frac{2(3 + \sqrt{2})}{9 - 2} = \frac{6 + 2\sqrt{2}}{7}$

Adding & Subtracting Surds

$\sqrt{5} + \sqrt{5} = 2\sqrt{5}$

$4\sqrt{3} + 7\sqrt{3} = 11\sqrt{3}$

$8\sqrt{2} - 5\sqrt{2} = 3\sqrt{2}$

$2\sqrt{5} - 7\sqrt{5} = -5\sqrt{5}$

$4\sqrt{7} + 3\sqrt{10} - \sqrt{7} - 2\sqrt{10} = 3\sqrt{7} + \sqrt{10}$

$\sqrt{2} + \sqrt{27} = \sqrt{2} + 3\sqrt{3} = \sqrt{2} + 3\sqrt{3}$

Multiplying & Dividing Surds

$\sqrt{2} \times \sqrt{5} = \sqrt{2 \times 5} = \sqrt{10}$

$\sqrt{3} \times \sqrt{7} = \sqrt{3 \times 7} = \sqrt{21}$

$\sqrt{6} \times \sqrt{6} = 6$

$\sqrt{2} \times \sqrt{2} = 2$

$\sqrt{5} \times \sqrt{5} = 5$

$\sqrt{2} \times \sqrt{2} = 2$

$\sqrt{10} - \sqrt{2} = \sqrt{10} - \sqrt{2}$

$\sqrt{12} - \sqrt{3} = \sqrt{4 \times 3} - \sqrt{3} = 2\sqrt{3} - \sqrt{3} = \sqrt{3}$

Problem Solving

Calculate the area and perimeter of this rectangle, leaving your answer in exact form

Perimeter: $1 + \sqrt{2}$ cm

Area: $6 + 4\sqrt{2}$ cm²

Key Things to Remember

$\sqrt{a} \times \sqrt{b} = \sqrt{ab}$

$\sqrt{a} - \sqrt{b} = \sqrt{\frac{a}{b}}$

$\sqrt{a} \times \sqrt{a} = a$

$\sqrt{a} \times \sqrt{b} = \sqrt{ab}$

$2\sqrt{a} - \sqrt{a} = \sqrt{a}$

To rationalise the denominator $\frac{1}{\sqrt{a}} \times \frac{\sqrt{a}}{\sqrt{a}} = \frac{\sqrt{a}}{a}$

It is really useful to know your square numbers: 1, 4, 9, 16, 25, 36, 49, 64, 81, 100, 121, 144, 169, 196, 225

Question	Answer
What is the mean of 4, 6, 8, 10?	
What is the median of 3, 5, 7, 9, 11?	
What is the mode of 2, 4, 4, 6, 8, 8, 8?	
What is a range in statistics?	
How do you find the frequency in a frequency table?	
Simplify $\sqrt{50}$	
Simplify $\sqrt{72}$	
What is $\sqrt{a^2}$ where a is positive?	
Express $3\sqrt{8}$ in simplest surd form	
What does 'surd' mean in mathematics?	

Question	Answer	Explanation
What is the mean of 4, 6, 8, 10?	7	$(4 + 6 + 8 + 10) \div 4 = 28 \div 4 = 7$
What is the median of 3, 5, 7, 9, 11?	7	Middle number in the ordered list
What is the mode of 2, 4, 4, 6, 8, 8, 8?	8	Number that appears most frequently
What is a range in statistics?	Difference between highest and lowest values	For example, range of 3, 5, 7 is $7 - 3 = 4$
How do you find the frequency in a frequency table?	Count of how many times a value appears	Example: 3 appears 5 times
Simplify $\sqrt{50}$	$5\sqrt{2}$	Because $\sqrt{50} = \sqrt{(25 \times 2)} = 5\sqrt{2}$
Simplify $\sqrt{72}$	$6\sqrt{2}$	$\sqrt{72} = \sqrt{(36 \times 2)} = 6\sqrt{2}$
What is $\sqrt{a^2}$ where a is positive?	a	Square root of a squared number is the number itself
Express $3\sqrt{8}$ in simplest surd form	$6\sqrt{2}$	$3 \times \sqrt{8} = 3 \times 2\sqrt{2} = 6\sqrt{2}$
What does 'surd' mean in mathematics?	An irrational root that can't be simplified to a whole number	Like $\sqrt{2}$ or $\sqrt{3}$

I NEED TO KNOW:

- Atoms, radioactive particles and the history of the atom
- Uses and dangers of radiation
- What is half life



<https://www.bbc.co.uk/bitesize/guides/z3tb8mn/revision/2>

1. Particles

	Symbol	Penetrating power	Ionising power	Range in air
Alpha	α	Skin/paper	High	< 5 centimetre (cm)
Beta	β	3 mm aluminium foil	Low	\approx 1 metre (m)
Gamma	γ	Lead/concrete	Very low	> 1 kilometre (km)

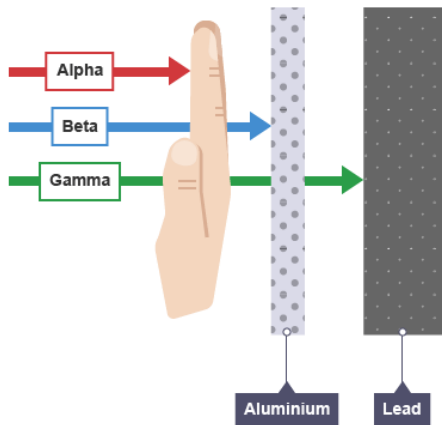
2. Uses and dangers of radiation

The effects of radiation on the human body

Radioactive materials are hazardous. Nuclear radiation can ionise chemicals within a body, which changes the way the cells behave. It can also deposit large amounts of energy into the body, which can damage or destroy cells completely.

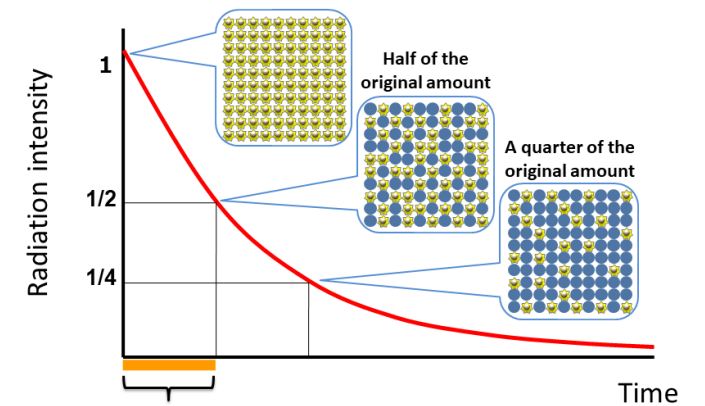
Some of the effects that radiation has on a human body are shown below.

Eyes	High doses can cause cataracts.
Thyroid	Radioactive iodine can build up and cause cancer, particularly during growth.
Lungs	Breathing in radioisotopes can damage DNA.
Stomach	Radioactive isotopes can sit in the stomach and irradiate for a long time.
Reproductive organs	High doses can cause sterility or mutations.
Skin	Radiation can burn skin or cause cancer.
Bone marrow	Radiation can cause leukaemia and other diseases of the blood.



3. Half life

Radioactive Materials Half-lives and Radioactive Decay



Time required for the amount of the radionuclides to reduce to half = (physical) half-life

Question	Answer
What are the three main types of radioactive particles?	
Which radioactive particle is the most harmful if ingested?	
What does “half-life” mean in radioactivity?	
How can radiation harm living cells?	
Which organs are most sensitive to radiation?	
What effect can radiation have on the thyroid?	
How does radiation affect bone marrow?	
Why are eyes vulnerable to radiation?	
What are the dangers of radiation to the lungs?	
Why is skin at risk from radiation exposure?	

Question	Answer
What are the three main types of radioactive particles?	Alpha, beta, and gamma radiation.
Which radioactive particle is the most harmful if ingested?	Alpha particles are most harmful inside the body.
What does “half-life” mean in radioactivity?	The time it takes for half of a radioactive substance to decay.
How can radiation harm living cells?	By damaging DNA and causing mutations.
Which organs are most sensitive to radiation?	Bone marrow, thyroid, lungs, stomach, reproductive organs, skin, and eyes.
What effect can radiation have on the thyroid?	It can cause thyroid cancer or dysfunction.
How does radiation affect bone marrow?	It can damage blood cell production, causing illness.
Why are eyes vulnerable to radiation?	Radiation can cause cataracts and damage to the lens.
What are the dangers of radiation to the lungs?	Radiation can cause lung cancer or damage lung tissue.
Why is skin at risk from radiation exposure?	Skin can develop burns or skin cancer from radiation.

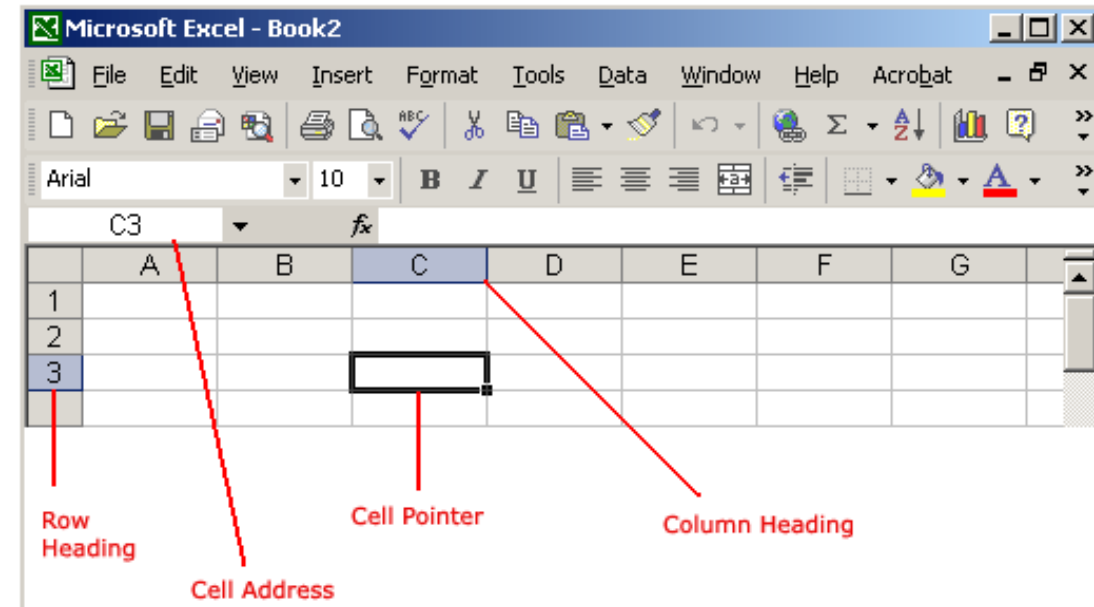
How to use formulas and calculations within a spreadsheet

I NEED TO KNOW:



=SUM(A1:A5)
 =COUNT(A1:A5)
 =AVERAGE(A1:A5)
 =MIN(A1:A5)
 =MAX(A1:A5)
 =IF(A1>33,"P","F")

	A	B	C	D	E
1	25		Operation	Result	Formula
2	5		Addition	30	=A1+A2
3			Subtraction	20	=A1-A2
4			Multiplication	125	=A1*A2
5			Division	5	=A1/A2



Question	Answer (Students fill this column)
1. How do you start a formula in a spreadsheet?	
2. What formula would you use to add values in A1 and B1?	
3. How do you calculate the total of cells A1 to A10?	
4. Write a formula to find the average of numbers in B2 to B6.	
5. How do you multiply the value in C1 by 5?	
6. What does the formula =A1-B1 do?	
7. How can you copy a formula down a column quickly?	
8. If you want to calculate 10% of a value in D1, what formula would you use?	
9. How do you reference a cell in a formula?	
10. What formula would give you the maximum value from cells A1 to A20?	

Question	Answer
1. How do you start a formula in a spreadsheet?	With an equal sign =.
2. What formula would you use to add values in A1 and B1?	=A1 + B1
3. How do you calculate the total of cells A1 to A10?	=SUM(A1:A10)
4. Write a formula to find the average of numbers in B2 to B6.	=AVERAGE(B2:B6)
5. How do you multiply the value in C1 by 5?	=C1 * 5
6. What does the formula =A1-B1 do?	Subtracts the value in B1 from A1.
7. How can you copy a formula down a column quickly?	By dragging the fill handle (small square) at the cell's corner.
8. If you want to calculate 10% of a value in D1, what formula would you use?	=D1 * 0.10
9. How do you reference a cell in a formula?	By using its column letter and row number, e.g., A1.
10. What formula would give you the maximum value from cells A1 to A20?	=MAX(A1:A20)

I NEED TO KNOW:

Different techniques used within Fashion & Textiles



Henri Matisse

In the late 1940s, Henri Matisse turned almost exclusively to cut paper as his primary medium, and scissors as his chief implement, introducing a radically new operation that came to be called a cut-out.

Matisse would cut painted sheets into forms of varying shapes and sizes—from the vegetal to the abstract—which he then arranged into lively compositions, striking for their play with colour and contrast and their exploitation of decorative strategies.

Initially, these compositions were of modest size but, over time, their scale grew along with Matisse's ambitions for them, expanding into



Mono Printing

Monoprinting is a printmaking technique that produces unique prints. Unlike traditional printmaking methods where multiple identical copies are made, monoprints are one-off prints. Each print is distinct and cannot be precisely replicated.

Monoprinting allows for a wide range of artistic expression and experimentation. Artists can explore various materials, textures, and techniques to create different effects. It offers flexibility in combining printmaking, painting, drawing, and mixed media approaches.

Monoprinting can be done by hand-printing or using a printmaking press.



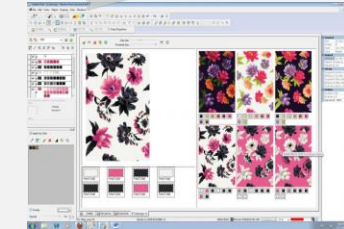
Transfer Printing

Transfer dye is a type of 'sublimation ink' which can be painted on to paper and then transferred to fabric using heat.

The inks/dyes that are used turn into gas when brought under heat, then combine with the fabric and permanently print onto the fabric.

The effects are permanent and less prone to fading, as the ink is embedded in the fabric or substrate rather than simply laying on top like a normal print.

The heat opens up the pores of the fabric, then with the applied pressure the ink cools and returns to a solid form.



Computer Aided Design

Positives :

- Save time and money
- Allow designers to be more creative because there is more variety
- Designers can have pre-made designs and adapt them easily – save time instead of re drawing them by hand
- Experimental work can be done digitally, saving time and money
- Designers can send their designs to other designers quickly by email – globally.

Negatives :

- Training is required to use all the features of a software
- All designers have to have compatible software when sending and receiving designs

Question	Answer
1. What medium did Henri Matisse focus on in the late 1940s?	
2. What are cut-outs?	
3. How did Matisse's cut-outs change over time?	
4. What is monoprinting?	
5. How is monoprinting different from traditional printmaking?	
6. What is transfer dye?	
7. How does transfer dye work on fabric?	
8. Name one positive of digital design for artists.	
9. Name one negative of digital design for artists.	
10. How can digital design benefit global collaboration?	

Question	Answer
1. What medium did Henri Matisse focus on in the late 1940s?	Cut paper using scissors to create cut-outs.
2. What are cut-outs?	Compositions made by cutting painted paper into shapes and arranging them.
3. How did Matisse's cut-outs change over time?	They grew larger and more complex.
4. What is monoprinting?	A printmaking technique that produces unique, one-off prints.
5. How is monoprinting different from traditional printmaking?	Traditional printmaking makes many copies; monoprints are unique and cannot be copied exactly.
6. What is transfer dye?	A sublimation ink that is painted on paper and transferred to fabric using heat.
7. How does transfer dye work on fabric?	The ink turns into gas under heat and embeds into the fabric permanently.
8. Name one positive of digital design for artists.	Saves time and money.
9. Name one negative of digital design for artists.	Training is required to learn software features.
10. How can digital design benefit global collaboration?	Designers can quickly send files by email to others around the world.

NEED TO KNOW:

Why we need to stay hygienic in the kitchen to prevent cross contamination

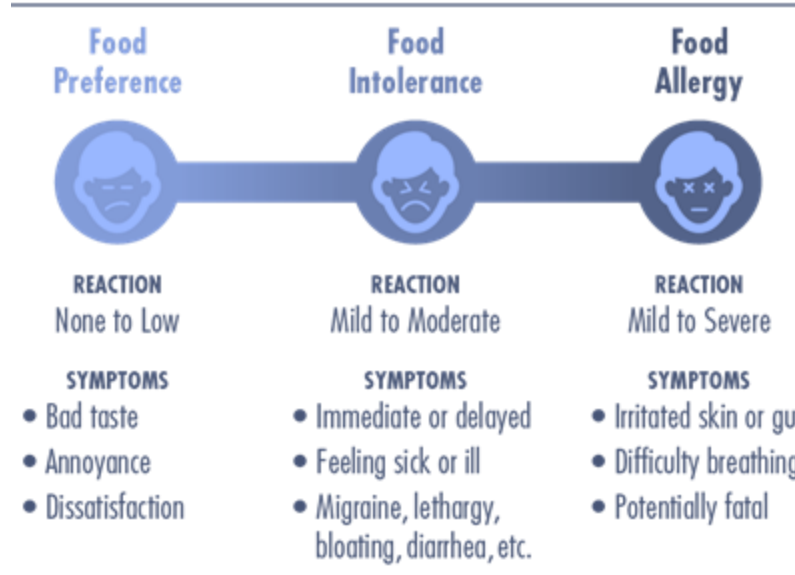
Understand how food can be contaminated

5 Types of Food Contamination

Physical	Chemical	Biological	Allergenic	Cross
<p>1</p> 	<p>2</p> 	<p>3</p> 	<p>4</p> 	<p>5</p> 
Hair or fur Dirt Metal Glass Plastic Bones Wood splinters Jewelry Fingernails Body parts Insects Small animals	Pesticides Insecticides Cleaning products Plastics Contaminated water Additives Preservatives Mercury / Lead Poisons Drugs	Bacteria Viruses Parasites Mold/fungi Yeast Algae Prions Microorganisms	Peanuts Dairy Soy Wheat Shellfish Egg Sesame seeds Mustard Sulfites	Equipment Touching Utensils Raw meat Cleaning Pests Illness



The difference between why customers cannot eat certain foods



To prevent cross contamination in the food room



How to wash up

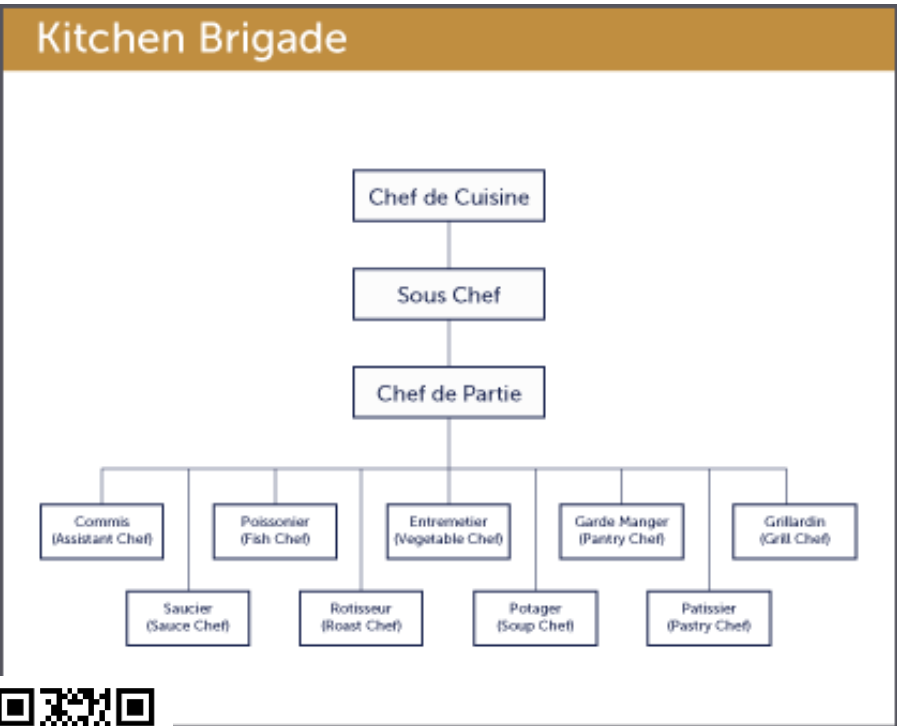


Question	Answer
1. What is physical contamination in food?	
2. What is chemical contamination?	
3. What is biological contamination?	
4. Give an example of a physical contaminant.	
5. Give an example of a chemical contaminant.	
6. What types of microorganisms cause biological contamination?	
7. What is a food allergy?	
8. What is a food intolerance?	
9. Name a common food allergen.	
10. How can food allergies be dangerous?	

Question	Answer
1. What is physical contamination in food?	When foreign objects like hair, glass, or metal get into food.
2. What is chemical contamination?	When harmful chemicals, like cleaning products, get into food.
3. What is biological contamination?	When food is contaminated by bacteria, viruses, or fungi.
4. Give an example of a physical contaminant.	A piece of broken glass in food.
5. Give an example of a chemical contaminant.	Cleaning spray residue on food preparation surfaces.
6. What types of microorganisms cause biological contamination?	Bacteria like Salmonella or viruses like Norovirus.
7. What is a food allergy?	When the immune system reacts badly to certain foods.
8. What is a food intolerance?	When the body has trouble digesting certain foods.
9. Name a common food allergen.	Peanuts or shellfish.
10. How can food allergies be dangerous?	They can cause serious reactions like anaphylaxis.

NEED TO KNOW:

About the different job roles/opportunities in the Hospitality and Catering Industry



How the kitchen is run in a Restaurant



Different residential establishments in Looe



What is the minimum wage?

National Minimum Wage (NMW) and National Living Wage (NLW)	For pay periods starting 1 st April 2023	For pay periods starting 1 st April 2024
National Living Wage (ages 23 and over)	£ 10.42	£ 11.44 (+9.8%)
21-22 year old rate	£ 10.18	£ 11.44 (+12.4%)
18-20 year old rate	£ 7.49	£ 8.60 (+14.8%)
16-17 year old rate	£ 5.28	£ 6.40 (+21.2%)
Apprentice rate (1 st year only)	£ 5.28	£ 6.40 (+21.2%)
Accommodation Offset	£ 9.10	£ 9.99 (+9.8%)

Different types of jobs in a Hotel

- Night porter**
 - Luggage
 - Night
 - Resolving issues
- Barista**
 - Coffee
 - Star Bucks
 - Hot
- Sous Chef**
 - 2nd in charge
 - Cooks
 - Boss
- Plongeur**
 - Dishes
 - Washing up
- Receptionist**
 - Checking in
 - Reception
- Maintenance team**
 - Fix
 - Mend
 - Broken
- Commis Chef**
 - Trainee
 - Chefs
 - Helps
- Head Chef**
 - In charge
 - Kitchen
 - Menu
- Security**
 - Safety
 - Deals with issues



Question	Answer
1. What is a kitchen brigade?	
2. Name one job in the kitchen brigade.	
3. What kind of residential establishments can you find in Looe?	
4. What is the minimum wage?	
5. Who sets the minimum wage?	
6. Name a common job in a hotel.	
7. What does a housekeeper do in a hotel?	
8. What is a receptionist's main job?	
9. Why do hotels need different types of jobs?	
10. What is one benefit of working in a hotel?	

Question	Answer
1. What is a kitchen brigade?	A team of chefs with different jobs working in a kitchen.
2. Name one job in the kitchen brigade.	Head chef or commis chef.
3. What kind of residential establishments can you find in Looe?	Hotels, guest houses, and holiday parks.
4. What is the minimum wage?	The lowest amount of money workers must be paid by law.
5. Who sets the minimum wage?	The government.
6. Name a common job in a hotel.	Receptionist or housekeeper.
7. What does a housekeeper do in a hotel?	Cleans rooms and makes beds.
8. What is a receptionist's main job?	To greet guests and manage bookings.
9. Why do hotels need different types of jobs?	To make sure everything runs smoothly for guests.
10. What is one benefit of working in a hotel?	Meeting new people and gaining work experience.

I NEED TO KNOW:

You will need to know what a cam is and what its function is
 You will need to know how to change rotary movement to reciprocating movement.

MATERIAL	DEFINITION
Pine	A light coloured softwood with an attractive grain that comes from an evergreen tree
Balsa wood	A very soft lightweight wood (but actually classed as a hardwood) That is used in model making and is ideal for 3D objects for the top of the automata
Dowel	A wooden rod used for axles and to reinforce simple wooden joints
Acrylic	A thermoplastic that can be used to improve the finish of our automata
PVA	The best glue to use when gluing wood to wood.



KEY WORD	DEFINITION
Automata	A mechanical device that changes one form of movement into another often to cause amusement
Jig	A clamp (often home made) that enables you to hold a piece of work and perform the same task to numerous identical pieces
Rotary Movement	The term to describe when something is turning
Reciprocating movement	The term to describe when something is going up and down
Oscillating movement	The term to describe when something is swinging like a pendulum

MACHINERY	DESCRIPTION
Fret Saw	An electronic saw
Disk sander	A disc that rotates with glass paper fixed onto the front
Dust extractor	A large unit that help remove dust that has been created by sanding
Pillar Drill	A vertical drill used for drilling very accurate holes

Question	Answer
1. What is an automata?	
2. What is a jig used for in manufacturing?	
3. What does rotary movement mean?	
4. What is a fret saw used for?	
5. What does a disk sander do?	
6. What is the purpose of a dust extractor?	
7. What is a pillar drill?	
8. What is pine wood?	
9. What is balsa wood known for?	
10. Why is it important to use jigs and machines safely?	

Question	Answer
1. What is an automata?	A mechanical device that moves on its own, often using gears or cams.
2. What is a jig used for in manufacturing?	A tool that helps guide a machine or tool to make accurate cuts or holes.
3. What does rotary movement mean?	Movement in a circular or spinning motion.
4. What is a fret saw used for?	Cutting intricate curves and shapes in wood or thin materials.
5. What does a disk sander do?	It smooths or shapes wood by sanding it with a spinning disk.
6. What is the purpose of a dust extractor?	To remove dust and debris from the air in a workshop to keep it clean and safe.
7. What is a pillar drill?	A machine used to drill precise holes in materials like wood or metal.
8. What is pine wood?	A common softwood used for furniture and construction.
9. What is balsa wood known for?	Being very lightweight and easy to cut, often used for models.
10. Why is it important to use jigs and machines safely?	To prevent accidents and make accurate products.

I NEED TO KNOW:

Use this sheet to prepare for each lesson and understand the key terminology that you will be learning throughout this topic beforehand. It is recommended that you prepare yourself for each lesson by looking over the information below and develop your skills beforehand so you're prepared. You can also read about the inspirations and influences for this topic to get more information. The project will develop your skills in the 4 assessment objective areas – research, observe, experiment and present.



Artists	BASIC INFO
Luke Dixon In depth study	Luke Dixon is a young, English and contemporary graphic artist, illustrator and print maker from Middlesbrough, UK. His work has been described as raw and graphic. He is known for black and white celebrity images using little to no tonal qualities.
Lea Nahon In depth study	French born female artists (born 2010_ based in Belgium. Artist in her own write but know for taking her sketch drawing style specialising in line and cross hatch into tattoo form. Highley sort after tattoo artist who has a waiting list over a year
KEY WORD/CONCEPT	DEFINITION
Inspiration / influence	Influence is the power to have an important effect on someone or something. If someone influences someone else, they are changing a person or thing in an indirect but important way.
Hatching / Cross Hatching	two groups of parallel lines that are drawn close together across each other, especially at an angle of 90°, on parts of a picture to show differences of light and darkness
Characteristic	a typical or noticeable quality of someone or something: <i>Unfortunately, a big nose is a family characteristic.</i>
Pen and ink / wash	a drawing executed with pen and ink. type of drawing. a representation of forms or objects on a surface by means of lines.
Interpretation	the way in which something is understood or explained by a person – their opinion
Technique	the manner and ability with which an artist, writer, dancer, athlete, or the like employs the technical skills of a particular art or field of endeavor. 2. the body of specialized procedures and methods used in any specific field
Depiction	Depiction is reference conveyed through pictures- an image that expresses that word or meaning

Week	Preparation and helpful links
1	Take photographs of your face at different angles – note how the angle effects the proportion and shape of the features
2	Collect faces from magazines – look at how media shows beauty / idealist faces
3	Trace a photo of your self and the draw into the piece with lines – similar to Luke Dixon https://www.ollow.fr/en/artiste/91-luke-dixon
6	Produce 4 sketches of family members – take 5 mins per portrait > be inspired by caricatures https://www.youtube.com/watch?v=f_NiBfnEAs
7	Look at the work of Lea Nahon https://www.leanahon.com/tattoos/

Question	Answer
1. What is a portrait scheme?	
2. Who is Luke Dixson?	
3. Who is Lea Nahon?	
4. What does 'inspiration' mean in art?	
5. What is 'influence' in art?	
6. What is hatching?	
7. Name a characteristic of pen and ink wash technique.	
8. What does 'depiction' mean?	
9. Why do artists use hatching?	
10. What are key words?	

Question	Answer
1. What is a portrait scheme?	A planned design or layout for creating a portrait artwork.
2. Who is Luke Dixson?	An artist known for detailed and expressive portraits.
3. Who is Lea Nahon?	An artist who uses mixed media and vibrant colors in portraits.
4. What does 'inspiration' mean in art?	The idea or influence that motivates an artist to create.
5. What is 'influence' in art?	The effect one artist or style has on another artist's work.
6. What is hatching?	Drawing closely spaced parallel lines to create shading.
7. Name a characteristic of pen and ink wash technique.	It uses ink and water to create light and dark areas.
8. What does 'depiction' mean?	The way an image or subject is shown or represented in art.
9. Why do artists use hatching?	To add texture and depth through shading.
10. What are key words?	Important words that describe techniques or ideas in art.

I NEED TO KNOW:

Exploring other ways of creative movement material other than

**WEEK
1 & 2**

Page to Stage

Throughout this year you have been exploring a variety of choreographic devices with set themes, this time round you will be given the freedom from a selection of 5 topics to create your own piece of choreography.

**WEEK
3 & 4**

Page to Stage

There will be set choreographic tasks you will undertake in order to make original movement material to link to your theme. This week you will be encouraged to revisit ideas, methods and movement material from previous terms to include into your choreography.

**WEEK
5 & 6**

Polish and Perform

You will be perform your choreography to the rest of the class and share reasonings behind why you selected certain movement material and how it links to your chosen theme.

To support the reflective process you will be tasked to complete a self and peer audit focusing on Technical, Expressive and choreographic skills to see how far you have progressed and areas that still need to be focused on.

Question	Answer
1. What is a choreographic device?	
2. How many topics can you choose from to create your choreography?	
3. Why are you encouraged to revisit previous ideas and movements?	
4. What will you do after creating your choreography?	
5. Why do you need to explain your movement choices?	
6. What is a self-audit in dance?	
7. What is a peer audit?	
8. Name one area you will focus on in your audits.	
9. Why is reflecting on your dance important?	
10. How can choreographic devices help your dance piece?	

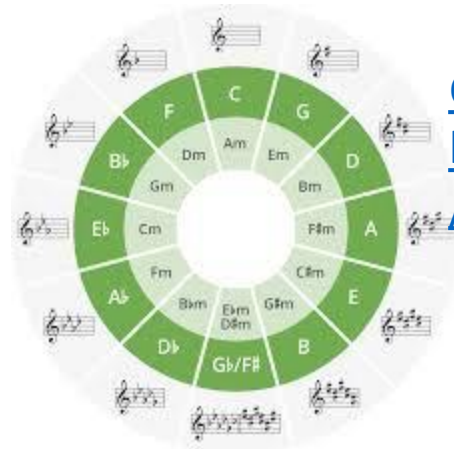
Question	Answer
1. What is a choreographic device?	A technique used to create or develop dance movements.
2. How many topics can you choose from to create your choreography?	Five different topics.
3. Why are you encouraged to revisit previous ideas and movements?	To build on and improve your choreography using what you've learned.
4. What will you do after creating your choreography?	Perform it to the class.
5. Why do you need to explain your movement choices?	To show how your movements connect to your theme.
6. What is a self-audit in dance?	Evaluating your own performance and skills.
7. What is a peer audit?	Receiving feedback from classmates on your dance.
8. Name one area you will focus on in your audits.	Technical skills, expressive skills, or choreographic skills.
9. Why is reflecting on your dance important?	It helps you understand your progress and what to improve.
10. How can choreographic devices help your dance piece?	They make the choreography more interesting and original.

I NEED TO KNOW:

Recap on MUSIC FOUNDATIONS

KEYWORDS

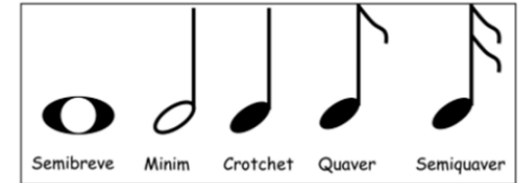
Duration	How long a note lasts for
Pitch	How high or low a note is
Tempo	How fast or slow a note is
Dynamics	How loud or quiet the music is
Timbre	The quality of sound
Texture	How thick or thin the music is
Structure	How the sections of music are laid out e.g. chorus, verse etc.
Silence	When the instruments stop playing



[Circle of Fifths](https://www.youtube.com/watch?v=O43EBVnwNvo)

<https://www.youtube.com/watch?v=O43EBVnwNvo>

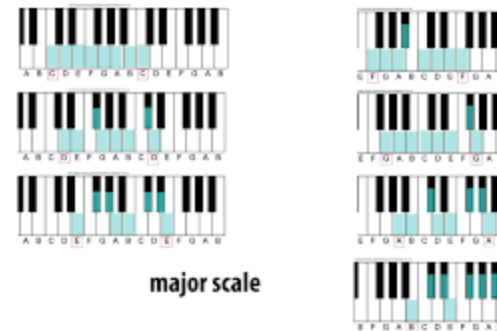
NOTE VALUES



NOTE AND REST DURATION CHART

NOTES (SOUNDING)	TYPE AND VALUE	RESTS (SILENT)
	Whole (4 Beats)	
	Half (2 Beats)	
	Quarter (1 Beat)	
	Eighth (1/2 Beat)	
	Sixteenth (1/4 Beat)	

Major scale



major scale



NOTES on STAFF

Concepts:
Listening- Creating-Performing

#	Question	Answer
1	What does duration mean in music?	
2	What is pitch in music?	
3	What does tempo refer to?	
4	What are dynamics in music?	
5	What does timbre mean?	
6	What is texture in music?	
7	What is structure in music?	
8	How can silence be used in music?	
9	How can changing the tempo affect a piece of music?	
10	What does a thick texture mean in music?	

#	Question	Answer
1	What does duration mean in music?	The length of time a note or sound lasts.
2	What is pitch in music?	How high or low a sound is.
3	What does tempo refer to?	The speed of the music—how fast or slow it is played.
4	What are dynamics in music?	The volume of music, ranging from soft to loud.
5	What does timbre mean?	The tone quality or color of a sound—what makes one instrument sound different from another.
6	What is texture in music?	How many layers of sound are heard at once, and how they interact.
7	What is structure in music?	The overall layout or form of a piece of music (e.g., verse-chorus-verse).
8	How can silence be used in music?	To create dramatic effect , build tension, or give space between sounds.
9	How can changing the tempo affect a piece of music?	It can change the mood or energy , making it feel more exciting or more relaxed.
10	What does a thick texture mean in music?	That there are many layers of instruments or voices playing at the same time.

I NEED TO KNOW:

What elements are needed behind the scenes for a theatre production (prep for KS4 or future jobs).

Terminology	
INTERACTIVE COSTUMING	Elements that actors can interact with, like removable layers or pieces that contribute to the storytelling.
WASH	Filling the stage with a certain colour. This will be strong and hard edged if created with a FLOODLIGHT (which 'floods' the stage with light).
FRESNEL	A type of light used to create a soft WASH. It was named after Augustin Fresnel, the inventor of the cut and ridged lens used in this fixture, and the reason why the Fresnel produces a beautiful soft light is it originally comes from the inventor's design for lighthouse lenses.
BACKDROP & CYCLORAMA	BACKDROP: A large cloth or canvas, usually painted, hung at the back of the stage as part of the scenery. CYCLORAMA (Cyc): A large curtain or wall, often curved, at the back of the stage used to create a background, often lit with various colours.

Week	
Week 1 – Costume & Sound	https://shorturl.at/d2Sjf https://shorturl.at/n4IJK
Week 2- Lighting & Effects	https://shorturl.at/6Xpe5
Week 3- Set	https://shorturl.at/sOccP



Question	Answer
1. What is interactive costuming in theatre?	
2. What does a wash light do on stage?	
3. What is a Fresnel light?	
4. What is a backdrop?	
5. What is a cyclorama (cyc) in theatre?	
6. Name one element needed behind the scenes in theatre.	
7. Why is lighting important in a theatre production?	
8. What is the role of a stage manager?	
9. What does “backstage” mean?	
10. Why are props important in theatre?	

Question	Answer
1. What is interactive costuming in theatre?	Costumes that allow actors to move easily or change quickly during a performance.
2. What does a wash light do on stage?	It provides a broad, even light across the stage.
3. What is a Fresnel light?	A type of stage light with a soft, even beam used for general lighting.
4. What is a backdrop?	A painted or printed cloth hung at the back of the stage to set the scene.
5. What is a cyclorama (cyc) in theatre?	A large curved curtain or wall used to create a background that can be lit in different colors.
6. Name one element needed behind the scenes in theatre.	Lighting equipment, sound systems, or props.
7. Why is lighting important in a theatre production?	It sets the mood, highlights actors, and creates atmosphere.
8. What is the role of a stage manager?	To organize rehearsals, manage the performance, and coordinate backstage.
9. What does “backstage” mean?	The area behind the stage where actors and crew prepare.
10. Why are props important in theatre?	They help tell the story and make scenes more realistic.

I NEED TO KNOW:

By the end of this term, you will develop an understanding of decision making, setting goal, self awareness and fulfilling potential.

Decision making		
Thinking Me	In striking and fielding games	
Tactics	Batting	Order, formation, tactics
	Fielding	Setting the field
	Bowling	Type of bowling to use
	Scoring	Knowing how and when to get runs/rounders

Setting personal goals	
Best Me	In athletics
SMART	Specific targets linked to athletics events
	Measurable targets like sprinting in a set time
	Achievable and Realistic targets linked to progress
	Time related to the unit of work

Self awareness reflection, fulfilling potential		
Physical Me	Through competition	
Evaluation of progress	Progress as a fielder in striking and fielding games	Overall effectiveness
	Physical progress in athletics	How to reflect on achievement of goals
	Understanding of team games	Influence over the team game
	Effectiveness of team members	Analysis of team and individual's contributions

Question	Answer
1. What is batting in sports like cricket or baseball?	
2. What does fielding involve?	
3. What is bowling in cricket?	
4. How is scoring done in cricket?	
5. What does SMART stand for in goal setting?	
6. Why is setting SMART goals useful in PE?	
7. What does overall effectiveness mean in a team sport?	
8. How can you measure the achievement of goals?	
9. Name a role of a team member in sports.	
10. Why is teamwork important in sports?	

Question	Answer
1. What is batting in sports like cricket or baseball?	Hitting the ball to score runs or points.
2. What does fielding involve?	Catching, throwing, and stopping the ball to prevent the other team from scoring.
3. What is bowling in cricket?	Delivering the ball towards the batter to try and get them out.
4. How is scoring done in cricket?	By runs scored when the batter hits the ball and runs between the wickets.
5. What does SMART stand for in goal setting?	Specific, Measurable, Achievable, Relevant, Time-bound.
6. Why is setting SMART goals useful in PE?	It helps players focus and improve by having clear targets.
7. What does overall effectiveness mean in a team sport?	How well a team works together and performs during a game.
8. How can you measure the achievement of goals?	By checking if the targets set have been met within the time frame.
9. Name a role of a team member in sports.	Captain, coach, player, or referee.
10. Why is teamwork important in sports?	It helps the team perform better and win games.

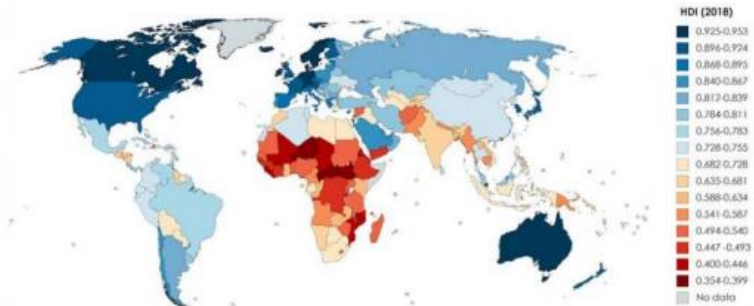
I NEED TO KNOW:

Why the world faces such a development gap, how we measure it, map it and solve the problem

Keywords	
Development	The process of improving and advancing.
Development gap	The gap between countries that have different levels of development.
Trade	The action of buying and selling goods and services
Fairtrade	Fairtrade is when the producers of a product get a fair price.
Tourism	When people go and visit other places/countries in their free time for leisure.
Gender inequality	Gender inequality is the idea and situation that women and men are not equal.
Poverty	The international standard of extreme poverty is when a person has to survive on less than 1\$ a day. Relative poverty means living a poorer quality of life, compared to the majority in an area.
Wealth	The amount of money and resources a person or country has.
Colony	A country or area that is controlled by another country.
Independence	Freedom
Dictator	A ruler with total power over a country, where there is no democracy.
Inequality	When something is not equal.
NGO	Non-governmental organisation is a non-profit organisation that operates independently of any government, typically one whose purpose is to address a social or political issue.
Refugee	A person who has been forced to leave their country in order to escape war, persecution, or natural disaster.
Refugee camp	A temporary accommodation area for people who have been displaced (had to leave their home).

HIC	High income countries – GNI per capita \$12,746 or more	Germany USA
MIC	Middle income countries – GNI per capita between \$12,746 and \$1045	Mexico, Iraq
LIC	Low income countries – GNI per capita \$1045 or less	Chad, Ethiopia

Measuring Development	
HDI	Human development index – a measure of development that incorporates life expectancy, literacy and income
GDP	Gross Domestic Product – total amount of money made in a country by selling products
Literacy rate	The proportion of adults who can read and write
Quality of life	An indicator based on opinions over statistics
GNI	Gross National Income – selling products plus outside companies
Per capita	Per person



What is it?	<ul style="list-style-type: none"> Goat aid is a charity that donates a goat to people in need in Africa It allows people to raise a goat and sell the products the goat makes
Positives	<ul style="list-style-type: none"> Goat milk and meat is a great food source Goats breed easily which is sustainable Manure is used as a crop fertiliser
Negatives	<ul style="list-style-type: none"> Looking after the goat can be expensive Teaching people to look after the goat takes time Vets are difficult to find in rural areas



Human factors affecting uneven development	
Aid <ul style="list-style-type: none"> Aid can help some countries develop key projects for infrastructure faster. Aid can improve services such as schools, hospitals and roads. Too much reliance on aid might stop other trade links becoming established. 	Trade <ul style="list-style-type: none"> Countries that export more than they import have a trade surplus. This can improve the national economy. Having good trade relationships. Trading goods and services is more profitable than raw materials.
Education <ul style="list-style-type: none"> Education creates a skilled workforce meaning more goods and services are produced. Educated people earn more money, meaning they also pay more taxes. This money can help develop the country in the future. 	Health <ul style="list-style-type: none"> Lack of clean water and poor healthcare means a large number of people suffer from diseases. People who are ill cannot work so there is little contribution to the economy. More money on healthcare means less spent on development.
Politics <ul style="list-style-type: none"> Corruption in local and national governments. The stability of the government can affect the country's ability to trade. Ability of the country to invest into services and infrastructure. 	History <ul style="list-style-type: none"> Colonialism has helped Europe develop, but slowed down development in many other countries. Countries that went through industrialisation a while ago, have now develop further.

Reducing the Global Development Gap

- Microfinance Loans**
This involves people in LICs receiving smalls loans from traditional banks.
- Foreign-direct investment**
This is when one country buys property or infrastructure in another country.
- Aid**
This is given by one country to another as money or resources.
- Debt Relief**
This is when a country's debt is cancelled or interest rates are lowered.
- Fair-trade**
This is a movement where farmers get a fair price for the goods produced.
- Technology**
Includes tools, machines and affordable equipment that improve quality of life.

Question	Answer
1. What is development in geography?	
2. What does trade mean?	
3. How does tourism affect a country's economy?	
4. What is wealth?	
5. What was a colony?	
6. What does NGO stand for?	
7. Who is a refugee?	
8. What is aid?	
9. Why is education important for development?	
10. How can politics affect a country's development?	

Question	Answer
1. What is development in geography?	The process of improving the economic, social, and living conditions in a country.
2. What does trade mean?	The buying and selling of goods and services between countries.
3. How does tourism affect a country's economy?	It brings money and jobs but can also cause environmental damage.
4. What is wealth?	The amount of money and valuable resources a person or country has.
5. What was a colony?	A country or area controlled and ruled by another country.
6. What does NGO stand for?	Non-Governmental Organization – groups that help with aid and development.
7. Who is a refugee?	A person forced to leave their country because of war, persecution, or disaster.
8. What is aid?	Help, often money or supplies, given to countries in need.
9. Why is education important for development?	It improves skills, knowledge, and job opportunities.
10. How can politics affect a country's development?	Decisions by leaders can help or harm economic growth and social services.

I NEED TO KNOW:

Causes, treatments, preventions, key people

Medieval Britain	
1	Medieval Britain is the period between 1250-1500 also known as the 13 th -16 th century or the Middle Ages.
Key events	
2	1123 Britain's first hospital, St Bartholomew's was set up in London
3	1350 Average life expectancy is 35 years of age
4	1348-49 The Black Death kills 1/3 of England's population
5	1388 Parliament passes the first law requiring streets and rivers to be kept clean by the people
Key Concepts	
6	The Medieval Church –The official religion of medieval Britain was Roman Catholic. Daily life and power was dominated by the Church, they controlled education and many people feared God.
7	The Four Humours. First suggested by Greek doctor Hippocrates. Black Bile, Yellow Bile, Blood and Phlegm. These humours linked to elements and seasons. Hippocrates believed that if these humours became unbalanced you would get ill. To get better, you needed to balance them. Galen, a Greek doctor working in Rome continued the theory and added his own ideas. His 'Theory of Opposites' to heal illness suggested using hot to cure cold.
8	Medieval Power The emphasis in Medieval Britain was on authority. The King had total power, but the Church had considerable control. People followed authority and would not question the views of King/Church as it would mean risking their lives.

Key Words		
9	Superstition	A belief, not based on knowledge, but on the supernatural. For example witchcraft or astrology
10	Purging	To rid the body of an 'excess' like blood or vomit
11	Leeching	The use of leeches for bloodletting
12	Cupping	Using glass cups to draw blood to the surface
13	Fasting	To avoid eating or drinking
14	Pilgrimage	A journey to a religious shrine and relics to show your love of God and to cure an illness
15	Mass	Public worship in the Roman Catholic Church
16	Astrology	Study of the planets and their effect on humans
17	Miasma	Bad air which was blamed for spreading disease
18	Apothecary	A medieval pharmacist or chemist
19	Wise Woman	A female healer, who used folk medicine and herbal remedies to cure illnesses.
20	Vademecum	A medieval medical book carried by doctors
21	Urine Chart	Used to examine urine to define an illness
22	Physician	A male medically trained doctor
23	Barber Surgeon	Untrained surgeon, who practiced basic surgery
24	Dissection	To cut open a human and examine the insides
25	Epidemic	A widespread outbreak of a disease
26	Trepanning	Cutting a hole in the skull
27	Amulet	A charm that bought protection from disease
28	Black Death	A term to describe the bubonic plague
29	Monastery	A building where monks live, eat and pray

Question	Answer
1. What were the Four Humours?	
2. How did the Four Humours theory explain illness?	
3. What was leeching?	
4. What was mass fasting used for in medieval times?	
5. Name a key figure associated with medieval medicine.	
6. What was the Black Death?	
7. How was the Black Death thought to be caused?	
8. What methods were used to prevent the Black Death?	
9. Who held most power in medieval society?	
10. Why was power important in controlling disease?	

Question	Answer
1. What were the Four Humours?	Blood, phlegm, black bile, and yellow bile believed to control health and personality.
2. How did the Four Humours theory explain illness?	Illness was caused by an imbalance of the four humours.
3. What was leeching?	A treatment using leeches to suck blood to balance the humours.
4. What was mass fasting used for in medieval times?	To cleanse the body and restore balance by denying food.
5. Name a key figure associated with medieval medicine.	Hippocrates or Galen.
6. What was the Black Death?	A deadly plague that killed millions in medieval Europe.
7. How was the Black Death thought to be caused?	Many believed it was punishment from God or caused by bad air (miasma).
8. What methods were used to prevent the Black Death?	Quarantine, burning clothes, and avoiding the sick.
9. Who held most power in medieval society?	The King and the Church.
10. Why was power important in controlling disease?	Leaders influenced laws and public health measures like fasting or isolation.

I NEED TO KNOW:

Issues of Good and Evil

Key Concepts			
Good	What is morally right and to our advantage.	Evil	What is considered very immoral and wrong.
Forgiveness	Granting pardon for a wrongdoing.	Free Will	Ability to make choices. Nothing is pre-determined.
Justice	Fairness; where everyone has equal opportunities.	Sin	Deliberate immoral action; breaking a religious or moral law.
Suffering	Pain or distress that can be physical or emotional.	Morality	Principles determining right from wrong.

Key Sources of Authority
<ul style="list-style-type: none"> • 'You shall not kill' from the Ten Commandments - Exodus 20.13 • Jesus taught that it was wrong to seek revenge and retribution. In Matthew 5 he taught that you should 'love your enemies' and that 'If someone slaps you on the right cheek, turn to them the left cheek also.' • Conscience

Are Prisons effective?	
Yes	No
Gives a sense of justice to the victim's family	Many prisoners reoffend
Protects society	Makes it difficult for them to get a job after
Gives the criminal chance to reflect	School of Crime – learn more criminal activity

Aims of Punishment	
Protection	Protect people from being the victims of crime.
Retribution	Getting revenge. The criminal needs to pay for what they have done wrong.
Deterrence	Put people off committing crimes
Reformation	The punishment should help to change the person for the better 're-form'
Vindication	To show that laws need to be followed
Reparation	Restoring the damage done (community service)

Death Penalty	
For	Against
Deters people from crime	Crime rate still high in states with capital punishment. It doesn't deter.
It protects society from awful criminals	Innocent people may die
It gives the victim's family closure/justice	Criminals need a chance to reform/ forgive them
Life in prison is expensive (40,000 a year)	Only God has the right to end life

Prison Reforms	
Elizabeth Fry	Quaker, went in to Victorian prisons to change them. Introduced education, separate cells and access to doctors.
Chaplains	A minister who works in a prison. They offer advice, counselling, run religious services and provide pastoral care for prisoners. They also help them get jobs after prison.
Christian reasons?	Jesus showed compassion to all. Love thy neighbour We are all made in the image of God.

Causes of Crime	
Poverty	Addiction
Mental Health Issues	Upbringing
Greed	Opposition to an unjust law
Poor Education	Poor Parenting



Question	Answer
1. What is meant by 'protection' in justice?	
2. What does 'retribution' mean?	
3. What is 'reformation' in criminal justice?	
4. How can poverty cause crime?	
5. Why is greed linked to crime?	
6. How does poor education contribute to crime?	
7. What is 'justice'?	
8. Name one argument for the death penalty.	
9. Name one argument against the death penalty.	
10. Who was Elizabeth Fry?	

Question	Answer
1. What is meant by 'protection' in justice?	Keeping society safe by preventing crime or punishing criminals.
2. What does 'retribution' mean?	Punishment intended as revenge for a crime.
3. What is 'reformation' in criminal justice?	Changing criminals to prevent them from offending again.
4. How can poverty cause crime?	Lack of money may lead people to steal or commit crimes to survive.
5. Why is greed linked to crime?	Wanting more than you need can lead to dishonest or illegal actions.
6. How does poor education contribute to crime?	Lack of education can limit job opportunities, increasing crime risk.
7. What is 'justice'?	Fair treatment under the law, ensuring right and wrong are balanced.
8. Name one argument for the death penalty.	It acts as a deterrent to serious crimes.
9. Name one argument against the death penalty.	It can lead to the execution of innocent people.
10. Who was Elizabeth Fry?	A reformer who worked to improve conditions for prisoners, especially women.

How to talk about holidays, my rights, my priorities, shopping and describing what makes me happy

Mes droits	My rights
J'ai le droit de/d'...	I am allowed to...
aller au McDo/ sur des forums, sur Facebook	go to McDonald's/ onto forums/on Facebook
jouer à des jeux vidéo	play video games
regarder la télé très tard	watch tv until late
sortir le weekend/seul(e)	go out alone at the weekend
surfer sur Internet une heure par jour	surf the web an hour a day

Les expressions avec avoir	Expressions with avoir
avoir envie de	to want to
avoir faim	to be hungry
avoir le droit de	to be allowed to
avoir raison	to be right
avoir soif	to be thirsty
avoir tort	to be wrong
en avoir marre de	to be fed up with

Les réactions	Reactions
Mais ce n'est pas juste!	But it is not fair!
C'est tout à fait normal	That's quiet right.
Ce n'est pas du tout normal	It is not normal
C'est fou!	That's crazy!
On te traite comme un enfant	They treat you like a child.
Mais révolte-toi!	Rebel!
Tes parents exagèrent!	Your parents are going too far!

Les conditions	Conditions
si j'aide à la maison	if I help at home
si j'ai fini mes devoirs	if I have finished my homework
si j'ai mon portable sur moi	if I have my phone on me
si je veux	if I want
si je rentre avant dix heures du soir	if get back before 10pm
si je veux	if I want
si mes parents savent avec qui je suis/où je vais	if my parents know with whom I am with/where I am going

Qu'est-ce qui est important pour toi dans la vie?	What is important for you in in life?
Ce qui est important pour moi, c'est...	What is important for me is...
Qu'est-ce qui te preoccupe dans la vie?	What worries you in life?
Ce qui me préoccupe, c'est..	What worries me is..
l'argent (m)	money
la cruauté vers les animaux	cruelty to animals
l'état de la planète	the state of the planet
mes études	my studies
la faim dans le monde	hunger in the world
l'injuste (f)	injustice
la musique	music
la pauvreté dans le monde	poverty in the world
ma santé	my health
la violence	violence
la racisme	racism

Question (French)	Answer (French)	Your Answer
1. Où aimes-tu aller en vacances ?	J'aime aller à la plage / à la montagne / en ville.	
(Where do you like to go on holiday?)	(I like to go to the beach / the mountains / the city.)	
2. Qu'est-ce que tu fais pendant tes vacances ?	Je me repose / je visite des monuments / je fais du sport.	
(What do you do during your holidays?)	(I rest / I visit monuments / I do sports.)	
3. Quels sont tes droits selon toi ?	J'ai le droit à l'éducation et à la liberté d'expression.	
(What are your rights, in your opinion?)	(I have the right to education and freedom of expression.)	
4. Quelle est ta priorité dans la vie ?	Ma priorité est ma famille / mes études / mes amis.	
(What is your priority in life?)	(My priority is my family / my studies / my friends.)	
5. Où fais-tu tes courses ?	Je fais mes courses au supermarché / au marché / en ligne.	

(Where do you do your shopping?)	(I do my shopping at the supermarket / market / online.)	
6. Qu'est-ce que tu aimes acheter quand tu fais du shopping ?	J'aime acheter des vêtements / des livres / de la nourriture.	
(What do you like to buy when you go shopping?)	(I like to buy clothes / books / food.)	
7. Qu'est-ce qui te rend heureux(se) ?	Être avec mes amis / écouter de la musique / voyager.	
(What makes you happy?)	(Being with my friends / listening to music / traveling.)	
8. Préfères-tu partir en vacances avec ta famille ou tes amis ?	Je préfère partir avec ma famille / mes amis.	
(Do you prefer to go on holiday with your family or friends?)	(I prefer to go with my family / my friends.)	
9. Comment respectes-tu les droits des autres ?	Je suis gentil(le) et j'écoute les autres.	
(How do you respect the rights of others?)	(I am kind and listen to others.)	
10. Pourquoi est-il important de faire du shopping local ?	Parce que ça aide les commerçants et l'économie locale.	
(Why is it important to shop locally?)	(Because it helps shopkeepers and the local economy.)	

I NEED TO KNOW:

How to talk about holidays, my rights, my priorities, shopping and describing what makes me happy

Des verbes utiles	Useful verbs
acheter	to buy
adopter	to adopt
agir	to act
consommer	to consume
énervé	to get on someone's nerves
exploiter	to exploit
fabriquer	to make
faire attention	to pay attention
devenir membre	to become a member
participer (à)	to take part (in)
penser	to think
protéger	to protect
respecter	to respect

Faire des achats	Shopping
bon marché	cheap
le commerce équitable	fair trade
les conditions de travail	working conditions
écologique	green
l'éthique sur l'étiquette	ethical labelling
l'ouvrier/l'ouvrière	worker
le produit	product

Qu'est-ce que c'est pour toi, le bonheur?	What is happiness for you?
Qu'est-ce que te rends heureux /heureuse?	What makes you happy?
Ce qui me rend heureux, c'est de/d' + infinitive	What makes me happy is...
Ce qui me rend heureux, c'est le / la / les (= noun)	What makes me happy is the..
Le bonheur, c'est quand...	Happiness is what..
accro	hooked
l'amitié	friendship
apprécier	to appreciate
déprimé(e)	depressed
décédé(e)	deceased
oublier	to forget
rester au lit	to stay in bed
réussir	to succeed
se retrouver	to meet up
se sentir	to feel
rigoler	to have fun

Les mots essentiels	High Frequency Words
à mon avis	in my opinion
au lieu de	instead of
avant tout	above all
comment	how
complètement	completely
être d'accord	to agree
franchement	frankly
malheureusement	unfortunately
malgré	in spite of
même	even
plein de	loads of
pour (+ infin)	in order to
pourtant	however

I NEED TO KNOW: Describing a trip to Madrid with a treasure hunt and buying souvenirs.

La caza de tesoro	The treasure hunt
Hay que...	We have to...
ir al estadio Santiago Bernabéu	go to the the Santiago Bernabeu stadium
ir al parque del Retiro	go to Retiro park
visitar el museo Reina Sofía	visit the Reina Sofia museum
coger el teleférico	take the cable car
comer...	eat...
comprar un postal de	buy a post card of
dibujar...	draw...
sacar fotos de...	take photos of...
ver...	see...
el campo de fútbol más famoso de Madrid	the most famous football pitch in Madrid
el cuadro más famoso de España	the most famous painting in Spain
los churros más ricos del mundo	the most delicious churros in the world
el león más feroz del parque	the most ferocious lion in the park

High frequency words:

primero	first
luego	then
después	after
más tarde	later
finalmente	finally
(o) tal vez	(or) perhaps
donde	where
este/esta	this
algo	something
para	for
usted	you
sobre todo	above all
el año pasado	last year

En la tienda de recuerdos	In the souvenir shop
¿Qué vas a comprar?	What are you going to buy?
¿Qué quiere usted?	What do you want?
Quiero (comprar) algo para mi (madre)	I want (to buy) something for my (mother)
Creo que voy a comprar...	Wei think that I'm going to buy...
un abanico/un collar	a fan/a necklace
un íman/un llavero	a magnet/a key ring
una camiseta	a T-shirt
una figurita	a figurine
una taza	a mug
turrón	nougat
Es precioso	It's lovely
Es útil	It's useful
¿Cuánto es?	How much is it?
Es demasiado caro/a	It's too expensive

Pregunta (Spanish)	Respuesta (Spanish)	Tu respuesta
1. ¿Dónde fuiste de viaje?	Fui a Madrid.	
(Where did you go on the trip?)	(I went to Madrid.)	
2. ¿Con quién fuiste?	Fui con mis amigos / mi familia.	
(Who did you go with?)	(I went with my friends / family.)	
3. ¿Qué hiciste en Madrid?	Hicimos una búsqueda del tesoro por la ciudad.	
(What did you do in Madrid?)	(We did a treasure hunt around the city.)	
4. ¿Qué lugares visitaste?	Visitamos museos, plazas y parques.	
(What places did you visit?)	(We visited museums, squares, and parks.)	
5. ¿Compraste recuerdos?	Sí, compré imanes y camisetas.	
(Did you buy souvenirs?)	(Yes, I bought magnets and t-shirts.)	
6. ¿Qué recuerdo te gustó más?	Me gustó más el llavero de Madrid.	
(Which souvenir did you like the most?)	(I liked the Madrid keychain the most.)	
7. ¿Cómo fue el tiempo durante el viaje?	Hizo sol y calor.	
(How was the weather during the trip?)	(It was sunny and hot.)	
8. ¿Qué comiste en Madrid?	Comí paella y churros.	
(What did you eat in Madrid?)	(I ate paella and churros.)	
9. ¿Te gustó la búsqueda del tesoro?	Sí, fue divertida y emocionante.	
(Did you like the treasure hunt?)	(Yes, it was fun and exciting.)	
10. ¿Volverías a Madrid?	Sí, me gustaría volver pronto.	
(Would you like to go back to Madrid?)	(Yes, I would like to go back soon.)	